



Marinette County

Courthouse
1926 Hall Avenue
Marinette, WI 54143
Phone: 715-732-7510



If you will need any type of accommodation or assistance as you attend any UW-Extension sponsored event, please contact the host county or Scott at the Marinette County office at least two days prior to the event. All requests will be confidential.

Scott Reuss
715-732-7510
1-877-884-4408
cell 715-923-0807
scott.reuss@ces.uwex.edu

Sarah Mills-Lloyd
920-834-6845
sarah.mills-lloyd@co.oconto.wi.us

An EEO/Affirmative Action Employer, University of Wisconsin-Extension provides equal opportunities in employment and programming, including Title IX and ADA requirements.

July, 2014 Newsletter

This is definitely becoming one of those growing seasons where we get reminded that weather dictates our ability to be fully productive. If you have prevented planting acres, make sure to manage the weeds on them, at a minimum. Cover crops are a strong option, or short-season forage crops for either your own livestock or possibly to sell to a neighbor.

Make certain that you are able to get your acres reported correctly and that whatever you decide to do on any unplanted acres is acceptable for your crop insurance - if you are claiming prevented planting, at least. If insurance is not a factor for you, you have more options, but the biggest key is still making sure you prevent seed set by the weeds that will inevitably be growing there. This also holds true for those wet spots in the middle of fields that didn't get planted. I know it's an absolute pain, but you may want to find a way to get a small spray rig out to those spots so that you don't feed the weed cycle for future years.

Scott Reuss

Newsletter Table of Contents

Page 2	FSA & NRCS Notes
Page 3	Holstein Association Twilight Meeting announcement
Page 4	Youth Tractor & Machinery Safety training flier

Local program Calendar of Events

July 10	6:30 pm	Harmony Arboretum	
		"Enabling the Gardener" - how to help yourself or family members stay involved in the garden as physical abilities change.	
July 17	9 pm	Harmony Arboretum	Astronomy Night
July 19	day @	various homes	Garden Walk (contact Gina Thompson at 715-732-7510 for details)
July 22	6:30 pm	Harmony Arboretum	Tree Fruit Pests
July 23,25,30 & August 1	9 a.m to 3:15 p.m.	Coleman	Youth Tractor & Machinery Safety Training
July 26	day	Chatham	MSU Forage Trials Field Day
July 28	5 pm	Iron River	MSU Pasture Walk
July 29	11 am	Daggett	MSU Forage Field Day
July 31	6:30 pm	Harmony Arboretum	Early Potatoes & In-season potato/sweet potato management
August 1	6 pm	Darren & Lynn Rusch farm	Annual Marinette County Holstein Association Twilight Meeting
August 12 -14	Days	Portage County	Farm Technology Days

FSA & NRCS notes

Cover Crops Cost-Share Sign up = NOW!

The U.S. Dept. of Agriculture Natural Resources Conservation Service (NRCS) has announced a special funding opportunity to help farmers plant cover crops for erosion control, soil health, or other conservation needs. Cover crops are highly effective in reducing soil erosion, as well as suppressing weeds and building up organic matter and soil health. The cover crop may include rye, oats, red clover, triticale, radishes, or other species, either alone or in combination. In our area, the most applicable times to plant a cover crop are: following corn silage, after winter wheat harvest, after early soybean harvest, or even in fields that were unable to get planted. Payment rates range from \$58-\$81/acre.

Highest priority will be given to farmers that have never planted cover crops before. This could be an opportunity for you to try radishes after winter wheat on a field with drainage issues. A cover crop such as radishes can act as the "poor man's tile". Worm holes and voids left after radishes decompose can give more hard-pan relief than spending money on fuel to deep-till a field.

Sign up at the NRCS office by July 11 to be considered for this funding. For Oconto & Marinette Counties, contact the NRCS office in Oconto or call District Conservationist, Jeff Maroszek (920) 834-5688 ext. 3. Florence & Forest County farms should contact Mike Stinebrink in Rhinelander at 2187 N Stevens St, Suite A, Rhinelander, WI 54501 or call him at Office: (715) 362-5941, Ext. 111

MICROLOAN PROGRAM

The Farm Service Agency (FSA) developed the Microloan (ML) program to better serve the unique financial operating needs of beginning, niche and small family farm operations.

FSA offers applicants a Microloan designed to help farmers with credit needs of \$35,000 or less. The loan features a streamlined application process built to fit the needs of new and smaller producers. This loan program will also be useful to specialty crop producers and operators of community supported agriculture (CSA).

Eligible applicants can apply for a maximum amount of \$35,000 to pay for initial start-up expenses such as hoop houses to extend the growing season, essential tools, irrigation and annual expenses such as seed, fertilizer, utilities,

land rents, marketing, and distribution expenses. As financing needs increase, applicants can apply for a regular operating loan up to the maximum amount of \$300,000 or obtain financing from a commercial lender under FSA's Guaranteed Loan Program.

Individuals who are interested in applying for a microloan or would like to discuss other farm loan programs available should contact their FSA office.

Livestock Forage & Indemnity Programs

The 2014 Farm Bill, formally known as the *Agricultural Act of 2014*, makes the Livestock Forage Program (LFP) and Livestock Indemnity Program (LIP) permanent programs and provides retroactive authority to cover eligible losses back to October 1, 2011.

LFP provides compensation to eligible producers who suffered grazing losses due to drought and fire. LIP provides compensation to livestock producers who suffered livestock death losses in excess of normal mortality due to adverse weather and attacks by animals reintroduced into the wild by the Federal Government or protected by Federal law, including wolves and avian predators.

Producers that may have eligible losses should record all pertinent information of natural disaster consequences. The enrollment period for eligible losses back to October 1, 2011, began April 15, 2014. Producers can review the LIP and LFP facts sheets on the web at [www://fsa.usda.gov/](http://www.fsa.usda.gov/) or contact your local office.

For more information about these or any other programs visit any FSA county office or visit FSA website at <http://www.fsa.usda.gov/>

Florence & Forest Counties -

Rhinelander, 715-362-5941 Ext. 104

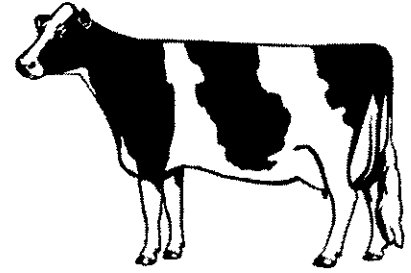
Oconto & Marinette Counties FSA -

920-834-2366

Marinette County Holstein Association

Annual Twilight Meeting

Friday, August 1



The Annual Twilight meeting is set for Friday evening, August 1, at the dairy farm of Darren & Lynn Rusch in the Town of Beaver. The farm team includes their son Arren and son-in-law Aaron Nowak and wife Amber.

The 150 grade Holstein herd has a unique operating system utilizing two conventional stanchion barns a mile apart on Co Hwy P. Fresh and heavy milking cows are milked 3X at the western barn that includes a one story addition that many of you recall seeing when Breakfast on the Farm was held here in 2009. Late lactation cows are then moved a mile east to the east location, where they are milked on a 2X routine. They crop 500 acres in the town of Beaver—300 acres corn and 100 acres alfalfa.

Darren and Lynn have over the years used top notch sires from Select Breeders. The June herd summary on Owner Sampler test is calculated for both 3X and 2X as 25,933M, Fat 963 lbs. 3.7%, Protein 776 lbs 3.2%. Cows are type evaluated by Select Breeders personal.

Over the past year, the Rusch family has been working with Mark Alden of Northeast Technical College and nutritionist, Matthew Bull, of Cargill, Inc. They have made significant increases in per cow production. Mr. Bull will be speaker at the Twilight meeting.

The farm is open to visitors at 6:00 p.m. with cow judging starting at 6:30 p.m. The formal program begins at 7:30 p.m. Door prizes round out the evening. All are welcome.

Farm location: W10420 Marinette Cty. Hwy. P. Coming from north, south, or east: Take Hwy. P west out of Beaver (Hwy. 141). Proceed west just over five miles (you'll go around two curves) to the farm on the right (north) side of the road. Coming from the west: Take Cty. Hwy. S north off Hwy. 64 5.5 miles to the farm, just make sure to go straight when S & P meet, don't turn north.

Evening lunch is supplied by the Holstein Association. Members please bring a pan of bars.

NOTABLE: Hartwig's, Kruse's, and all the volunteers that manage the Breakfast on the Farm Events deserve a round of applause and then some. Between the two events (at least from what I've been told for current estimates), approximately 8,500 people had the chance to eat, learn, and experience farm life – at least for part of a day. I truly believe Breakfast on the Farm events are one of the few ways to get non-farm families onto a farm to gain a better understanding of the realities of agriculture.

Great Jobs, Everyone!

These events happen because of volunteers, and for them to continue in the future, both counties need new people to consider becoming involved in the primary planning committees, sub-committees, and cooking & volunteer crews. It is work, but it is definitely rewarding. Our entire industry needs to continue to offer non-farm people the chance to learn about real farms, not the ones they see on the news.

2014 Youth Tractor and Machinery Safety Training

Pound Town Hall – Coleman, WI

Wednesdays & Fridays, July 23, 25, 30 & August 1

Makeup days will be scheduled if needed.

Cost: \$35/person

9 a.m. to 3:15 pm each day

UW
EXTENSION
Cooperative Extension



*Your county
extension office*

Who Needs To Attend the Training? Any 12 to 15-year old who may need to drive any type of farm machinery on a public road in Wisconsin. Others are welcome to attend the course, but only those older than 12 will receive certification. Those 16 years old and older without a valid driver's license can also utilize this training to be legal to drive farm machinery on public roads.

Legal Review: In Wisconsin, 14 and 15 year-olds who have successfully passed the Wisconsin Safe Operation of Tractor and Farm Machinery Course can legally drive farm machinery on public roads for their parents or grandparents' farms AND can work for other farms and do the same. 12 and 13-year olds who have completed the course can legally drive farm machinery on public roads only when working for their parents or grandparents' farms. If you employ persons under 15 years or who do not have a driver's license, it is highly recommended that you have them attend the training, whether they drive on public roads or not, as this is a good all-around safety training (and you should be collecting a copy of their federal permit from them). You may want to talk to your insurance agent to double-check about requirements based on your insurance policy.

Some Logistics:

- State law mandates 24 hours of training for this program. If participants are not going to be able to attend one of the scheduled days, we will figure out an acceptable make-up day that matches our schedules to allow them to complete the course. **Friday, August 1 is testing day and all participants MUST be in attendance.**
- Participants need to bring their own lunches, a refrigerator will be available for storage. Families are welcome to provide snacks, Scott will have water and/or lemonade and/or milk available.
- The course will emphasize hands-on and skill-building exercises, including first aid and fire safety from local emergency response personnel. We will be analyzing machinery for safety aspects, conducting on-farm safety assessments, and dozens of other activities, along with videos and course material review.

Call Scott or Gina at the Marinette County UWEX office, at either 715-732-7510 or toll-free 1-877-884-4408 if you have any questions, or you can e-mail to scott.reuss@ces.uwex.edu

Registration Form - Tractor & Machinery Safety Training - please print

Name(s): _____ Age(s): _____

Mailing Address: _____
City: _____ Zipcode: _____

Emergency Contact Telephone Number: _____

Please complete this form and mail to the following address by July 22, with a check for \$35 per participant and made payable to UW-Extension. OR contact Scott with the above information by then!

Marinette County UW-Extension
1926 Hall Avenue
Marinette, WI 54143